

Deep Surface Mount Profile

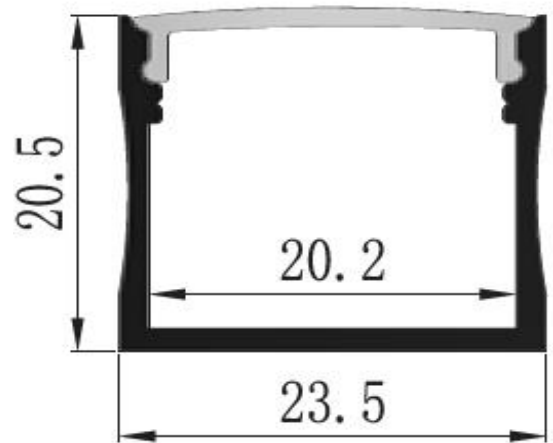
JB2421-3M



- 5 Year Warranty
- 3000mm length
- Can be cut to size
- Suitable for surface mount
- Excellent heat sink
- Anodized aluminium
- * *Powdercoating available*

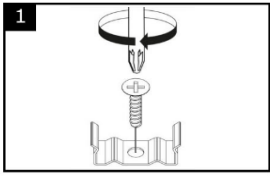


Call us now on (03) 8521-6470
to quote your project big or small

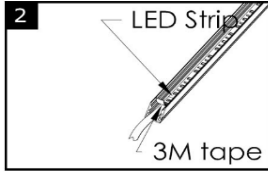


Installation

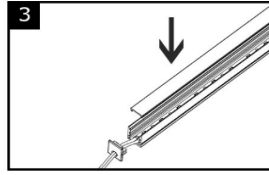
Surface Mount



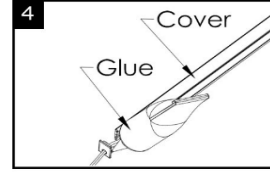
1 Position and secure the clips in place using flat head screws.



2 Remove the adhesive tape on the back of the LED strip tape. Position LED strip carefully and stick down.

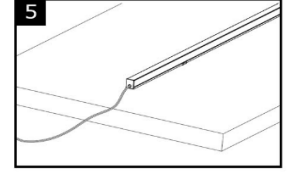


3 Press the diffuser onto the aluminium profile.



4 Push the end cap into the aluminium profile.

(For a firm fit apply glue.)



5 Press the aluminium profile into the clips then connect the driver.

Key Information

- ❖ Face 23.5mm
- ❖ Dimensions 3000mm x 23.5mm x 20.5mm
- ❖ Material Premium quality extruded anodized aluminium
Premium quality frosted light diffuser
- ❖ LED Strip Suits all JB-SL12V & JB-SL24V Strip Light Range
Compatible with 8mm, 10mm & 12mm width LED strip light

Specification subject to change without prior notice. Last updated 01/08/2021