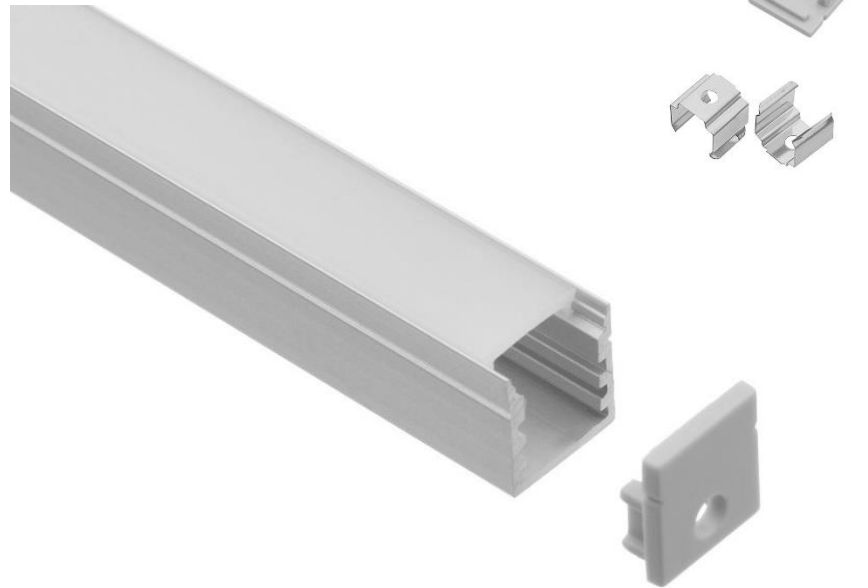


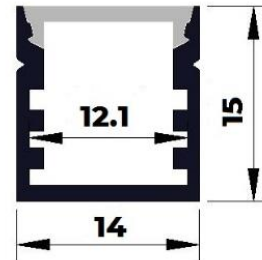
# Deep 14mm Aluminium Profile

- 5 Year Warranty
  - Endcaps & mounting clips included
  - 2000mm or 3000mm length
  - Can be cut to size
  - Suitable for surface mount
  - Opal light diffuser
  - Excellent heat sink
  - Anodized aluminium
- \* Powdercoating available

**JB1415-2M**

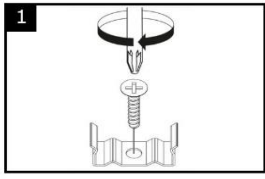


Call us now on (03) 8521-6470  
to quote your project big or small

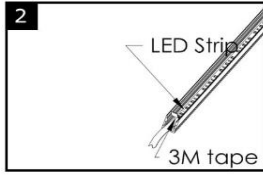


# Installation

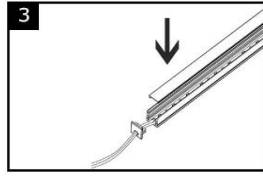
## Surface Mounted



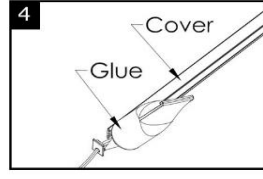
Position and secure the clips in place using flat head screws.



Remove the adhesive tape on the back of the LED strip tape. Position LED strip carefully and stick down.

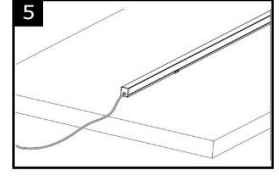


Press the diffuser onto the aluminium profile.



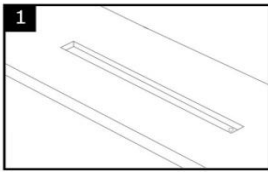
Push the end cap into the aluminium profile.

(For a firm fit apply glue.)

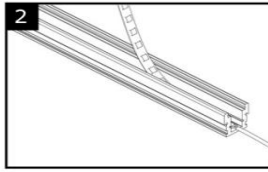


Press the aluminium profile into the clips then connect the driver.

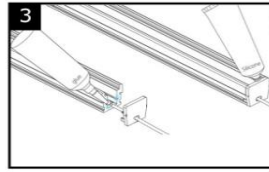
## Recessed



Create a recess for profile, ensure that a second recess is also created for the driver.

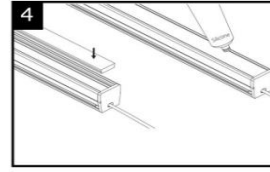


Remove the adhesive tape on the back of the LED strip tape. Position LED strip carefully and stick down.

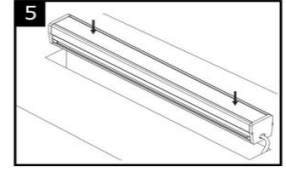


Feed endcaps onto profile.

(For a firm fit apply glue.)



Push diffuser into aluminium.



Press the profile into the recess ensuring the driver wire has been threaded through the second recess.

## Key Information

- ❖ Face 12.1mm
- ❖ Dimensions 2000mm x 14mm x 15mm
- ❖ Material Premium quality extruded anodized aluminium  
Premium quality frosted light diffuser
- ❖ LED Strip Suits all JB-SL12V & JB-SL24V Strip Light Range  
Compatible with 8mm, 10mm & 12mm width LED strip light

Specification subject to change without prior notice. Last updated 01/08/2021